

TILT BAFL Installation (Non-Lit)

Acoustical Baffle

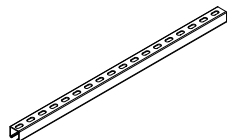
These installation suggestions consist of a common process for baffle installation. Installers should rely upon their own professional experience and understanding of their unique requirements to ensure a successful install.

Confirm your Unistrut installation has been completed. Consult with a professional about a proper Unistrut installation for your ceiling type (concrete vs. sheet-rock).

Tools Needed

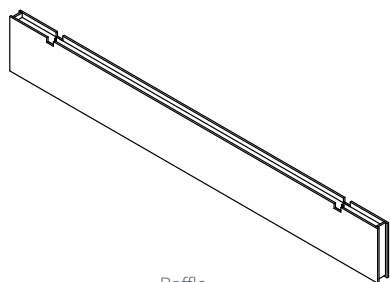


Drill

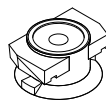


Unistrut
Installed

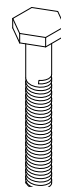
Items Included



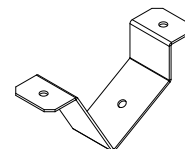
Baffle



Nylon Cone Nut



(2) 1/4-20 Bolt



(2) Tilt Bracket



Hanger Bolt Driver
(IVY classic)

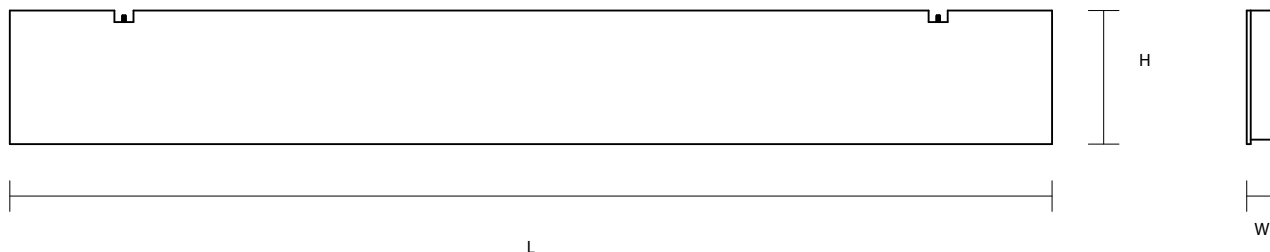


(2) 1/4-20 Nut



(2) Fender Washer

1. Unwrap Baffle from plastic wrap. Confirm baffle dimensions match your needs.



TILT BAFL Installation (Non-Lit)

Acoustical Baffle

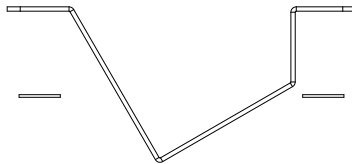
2. Installing Tilt Bracket to Unistrut



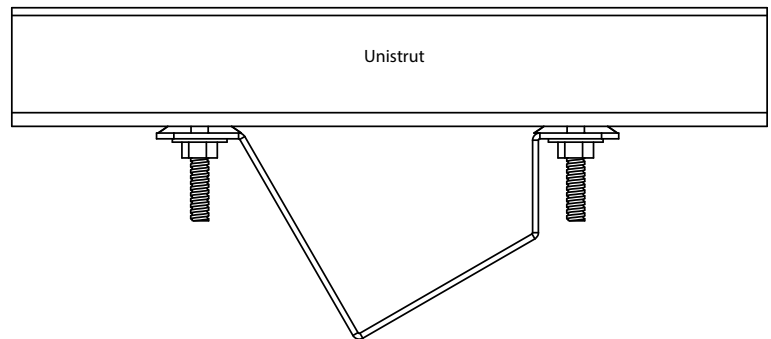
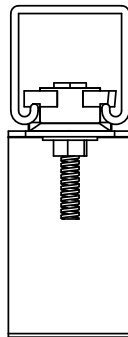
1. Screw the bolt through center of cone nut



2. Insert tilt bracket & fender washer



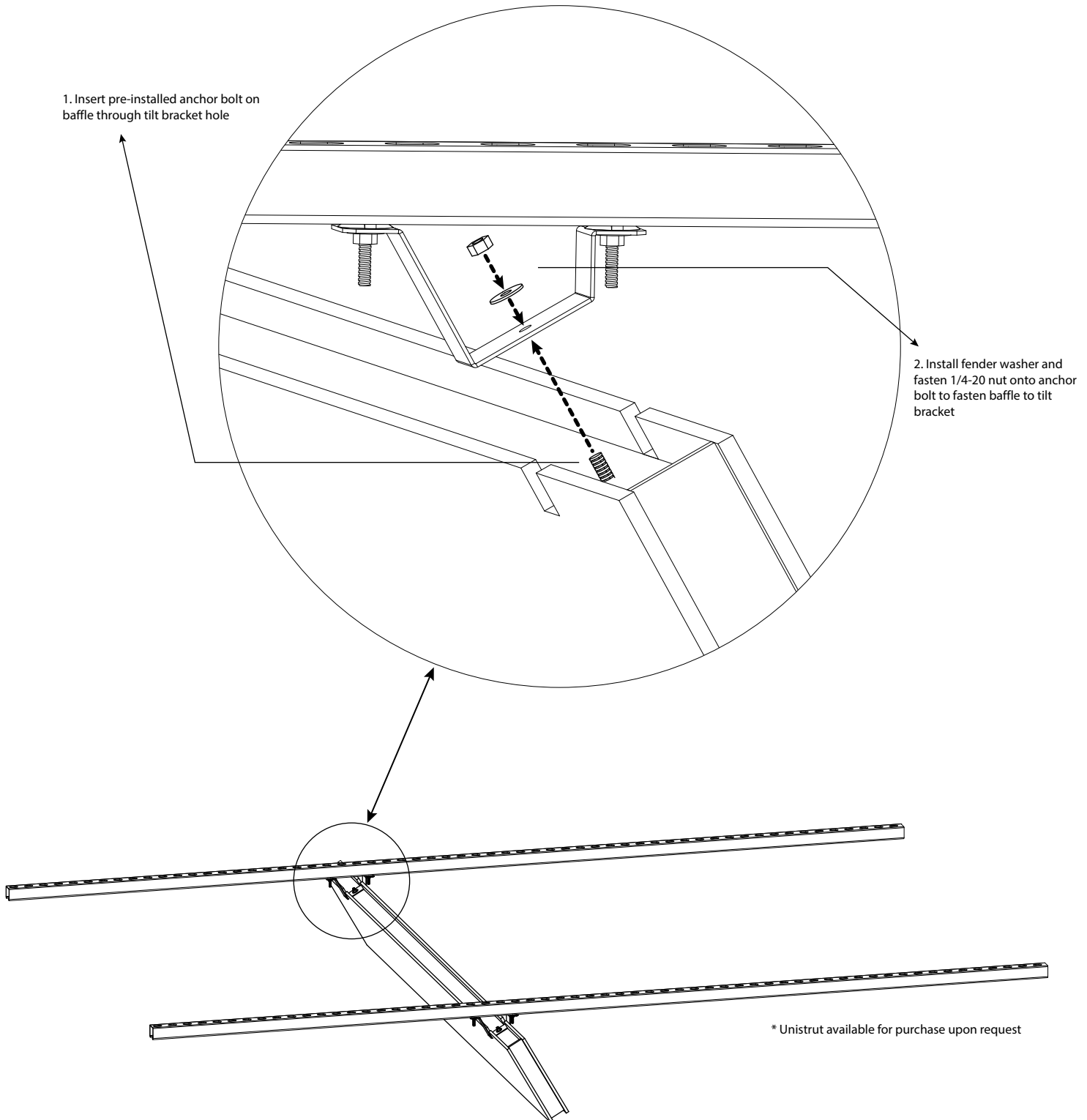
3. Screw on nut to the bolt



TILT BAFL Installation (Non-Lit)

Acoustical Baffle

3. Installing baffle to Tilt Bracket.



TILT BAFL Installation (Non-Lit)

Acoustical Baffle

4. Sample Layout Views

