

## RIPL Installation

These installation suggestions consist of a common process for RIPL installation. Installers should rely upon their own professional experience and understanding of their unique requirements to ensure a successful install.

**DISCLAIMER:** It is recommended a minimum of 3-4 people work on the assembly.

---

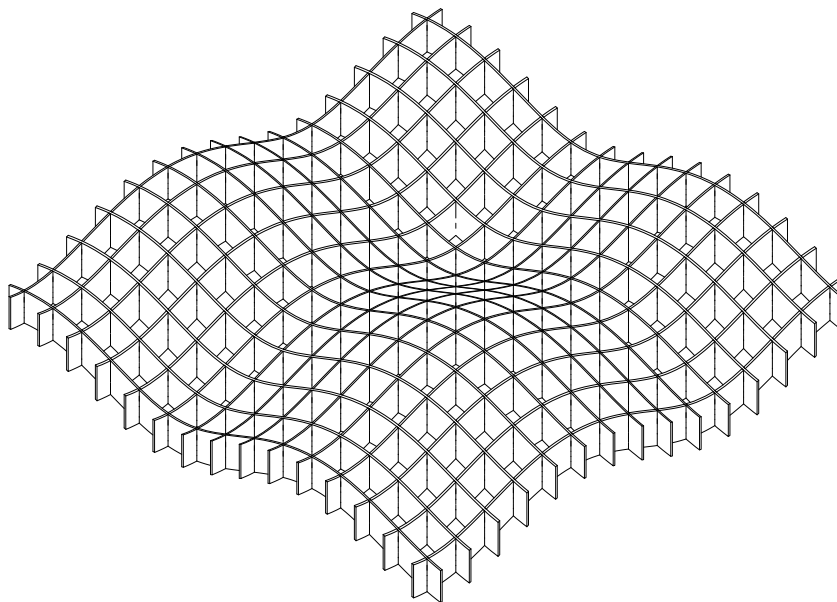
### Tools Needed



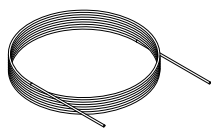
Cable Cutter & Crimper

---

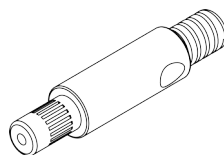
### Items Included



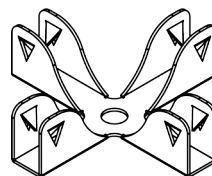
Assembled Acoustical RIPL



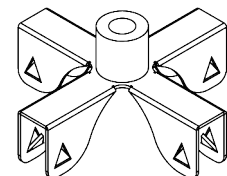
Aircraft Cable



Griplock



4-way Bracket



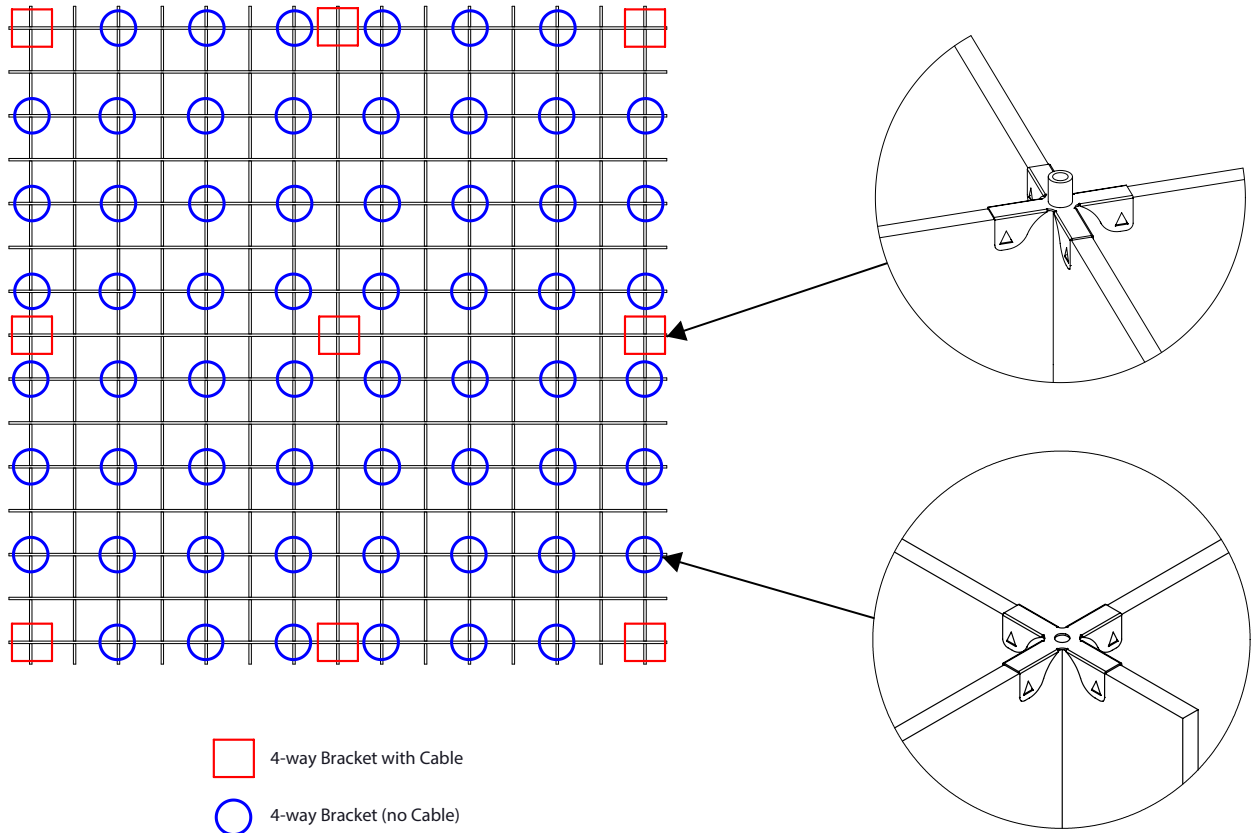
4-way Bracket with Thread

---

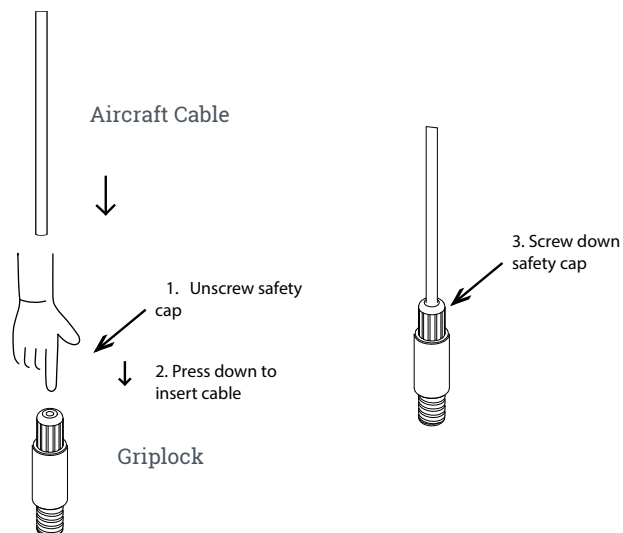
\*Actual product comes with more bracket attached to it

1. The RIPL will come pre-assembled with all the strips in place, along with multiple **4-way Brackets with Threads** placed on top of the strips. Locate the **nine brackets marked in red below** - these will require further cable installation.

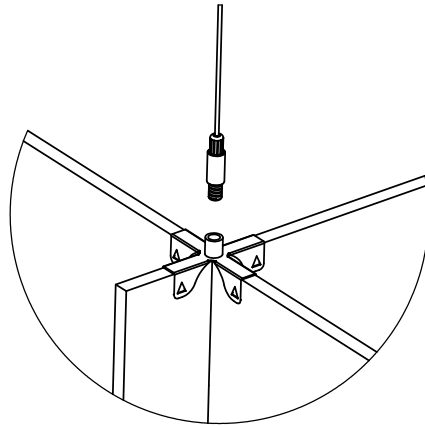
**NOTE:** The rest of the **4-way Brackets without Threads** are used for stability and security - these **do not** require cables or further installation.



2. Insert the Aircraft Cable into the Griplock. Loosen the head cap of the Griplock to push the Aircraft Cable. It will automatically lock once the cap is released. Screw the cap back.



3. Insert the Griplock into the 4-way Bracket with Threads and do that for the rest of the connections.



4. Finish the installation.

